

Basic Report



Title: Actor Ichikawa (Komazō?)
Date: 1794 - 1795
Primary Maker: Unknown
Medium: Woodblock print (Nishiki-e); ink and color on paper



Title: The Actor Sawamura Sōjūrō III as Ōgishi Kurando
Date: 1794
Primary Maker: Tōshūsai Sharaku
Medium: Ink, color and mica on paper
Technique: Nishiki-e (Woodblock print with color blocks)



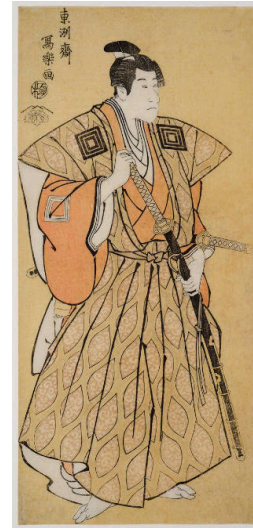
Title: The Actors Ichikawa Omezō I as Sekitori Ikazuchi and Ōtani Oniji II as Ukiyo Tsuchihei in the Play Nihon-Matsu Michinoku Sodachi
Date: 1794
Primary Maker: Tōshūsai Sharaku
Medium: Woodblock print (Nishiki-e); ink and color on paper, mica



Title: The Actors Nakajima Wadaemon as Bōdara Chōzaemon and Nakamura Konozō as Gon, a Boatman, in the play "Katakiuchi Noriai Banashi"
Date: 1794
Primary Maker: Tōshūsai Sharaku
Medium: Woodblock print (Nishiki-e); ink and color on paper, mica



Title: Arashi Ryūzō in role of Moneylender, Ishibe Kinkichi
Date: 1794
Primary Maker: Tōshūsai Sharaku
Medium: Woodblock print (Nishiki-e); ink and color on paper, mica



Title: Ichikawa Danjūrō VI as Fuwa Bansaku in the play Keisei Sambon Karakasa
Date: 1794
Primary Maker: Tōshūsai Sharaku
Medium: Woodblock print; ink and color on paper



Title: Ichikawa Ebizō as Takemura Sadanoshin in the play, Koi-Nyōbō Somewake Tazuna
Date: 1794
Primary Maker: Tōshūsai Sharaku
Medium: Woodblock print; ink, color, and mica on paper



Title: Ichikawa Yaozō III in the role of Tanabe Bunzō
Date: 1794
Primary Maker: Tōshūsai Sharaku
Medium: nishiki-e (Color woodblock print)
Technique: Nishiki-e (Woodblock print with color blocks), mica



Title: Matsumoto Yonesaburō in the role of Courtesan Kewaizaka no Shōshō (Shinobu)
Date: 1794
Primary Maker: Tōshūsai Sharaku
Medium: Woodblock print (Nishiki-e); ink and color on paper, mica



Title: Modern Reproduction of: Actor Bandō Hikosaburō III as Sagisaka Sanai
Date: after 1906
Primary Maker: Tōshūsai Sharaku
Medium: Modern reproduction of a woodblock print; ink and color on paper



Title: Modern Reproduction of: Actor Osagawa Tsuneyo II
Date: 20th century
Primary Maker: Tōshūsai Sharaku
Medium: Modern reproduction of a woodblock print; ink and color on paper



Title: Modern Reproduction of: Actors Matsumoto Kōshirō IV as Magoemon and Nakayama Tomisaburō I as Umegawa in the Kabuki Performance "Yomo no Nishiki Kōkyō no Tabiji"
Date: after 1928
Primary Maker: Tōshūsai Sharaku
Medium: Modern reproduction of a woodblock print; ink and color on paper



Title: Modern
Reproduction of: Actors
Nakajima Wadaemon
and Nakamura Konozō
as Bōdara no
Chōzaemon and
Kanagawaya no Gon in
the Play "Katakiuchi
noriyaibanashi"

Date: 1917-1918

Primary Maker: Tōshūsai
Sharaku

Medium: Modern
reproduction of woodblock
print; ink, color, and mica
on paper



Title: Modern
Reproduction of: Actors
Nakajima Wadaemon
as Bōdara Chōzaemon
and Nakamura Konozō
as Gon of the
Kanagawaya in the
Kabuki Performance
"Katakiuchi
Noriaibanashi"

Date: 20th century

Primary Maker: Tōshūsai
Sharaku

Medium: Modern
reproduction of a
woodblock print; ink and
color on paper



Title: Modern
Reproduction of: Actors
Nakajima Wadaemon
as Bōdara Chōzaemon
and Nakamura Konozō
as Gon of the
Kanagawaya in the
Kabuki Performance
"Katakiuchi
Noriaibanashi"

Date: 20th century

Primary Maker: Tōshūsai
Sharaku

Medium: Modern
reproduction of a
woodblock print; ink and
color on paper



Title: Modern
Reproduction of: Actors
Sawamura Yodogorō II
as Kawatsura Högen
and Bandō Zenji as
Oninosadobō in the
Kabuki Performance
"Yoshitsune Senbon-
zakura"

Date: after 1928

Primary Maker: Tōshūsai
Sharaku

Medium: Modern
reproduction of a
woodblock print; ink and
color on paper



Title: Modern
Reproduction of: Actors
Segawa Kikunojo III
and Sawamura Sojuro
III

Date: after 1928

Primary Maker: Tōshūsai
Sharaku

Medium: Modern
reproduction of a
woodblock print; ink and
color on paper



Title: Modern
Reproduction of: Actors
Segawa Tomisaburō II
as Yadorigi, Wife of
Ōgishi Kurando, and
Nakamura Man'yo as
the Maid Wakakusa in
the Kabuki
Performance "Hana
Ayame Bunroku Soga"

Date: after 1906

Primary Maker: Tōshūsai
Sharaku

Medium: Modern
reproduction of a
woodblock print; ink and
color on paper



Title: Modern
Reproduction of: Arashi
Ryūzō I and Ōtani Hiroji
III

Date: after 1928

Primary Maker: Tōshūsai
Sharaku

Medium: Modern
reproduction of a
woodblock print; ink and
color on paper



Title: Modern
Reproduction of:
Ichikawa Ebizō as
Takemura Sadanoshin
in the Kabuki
Performance "Koi-
Nyōbō Somewake
Tazuna"

Date: after 1928

Primary Maker: Tōshūsai
Sharaku

Medium: Modern
reproduction of a
woodblock print; ink and
color on paper



Title: Modern
Reproduction of:
Ichikawa Ebizō as
Takemura Sadanoshin
in the play, "Koi-Nyōbō
Somewake Tazuna"

Date: 20th century

Primary Maker: Tōshūsai
Sharaku

Medium: Modern
reproduction of a
woodblock print; ink and
color on paper



Title: Modern
Reproduction of:
Ichikawa Komazō III as
Shiga Daishichi

Date: after 1928

Primary Maker: Tōshūsai
Sharaku

Medium: Modern
reproduction of a
woodblock print; ink and
color on paper



Title: Modern
Reproduction of:
Ichikawa Monnosuke II
as Date no Yosaku

Date: 20th century

Primary Maker: Tōshūsai
Sharaku

Medium: Modern
reproduction of a
woodblock print; ink and
color on paper



Title: Modern
Reproduction of:
Ichikawa Omezō I as
the Footman (Yakko)
Ippei

Date: after 1928

Primary Maker: Tōshūsai
Sharaku

Medium: Modern
reproduction of a
woodblock print; ink and
color on paper



Title: Modern
Reproduction of:
Ichikawa Omezō I as
the Footman (Yakko)
Ippei
Date: after 1928
Primary Maker: Tōshūsai
Sharaku
Medium: Modern
reproduction of a
woodblock print; ink and
color on paper



Title: Modern
Reproduction of:
Ichikawa Omezō I as
Tomita Hyōtarō and
Ōtani Oniji III as
Kawashima Jibugorō
Date: after 1928
Primary Maker: Tōshūsai
Sharaku
Medium: Modern
reproduction of a
woodblock print; ink and
color on paper



Title: Modern
Reproduction of:
Ichikawa Yaozō III as
Fuwa Banzaemon and
Sakata Hangorō III as
Kosodate Kannonbō
Date: after 1928
Primary Maker: Tōshūsai
Sharaku
Medium: Modern
reproduction of a
woodblock print; ink and
color on paper



Title: Modern
Reproduction of:
Ichikawa Yaozō III as
Fuwa no Banzaemon
and Sakata Hangorō III
as Kosodate no
Kannonbo
Date: 20th century
Primary Maker: Tōshūsai
Sharaku
Medium: Modern
reproduction of a
woodblock print; ink and
color on paper



Title: Modern
Reproduction of: Iwai
Hanshirō IV as the Wet
Nurse Shigeno
Date: 20th century
Primary Maker: Tōshūsai
Sharaku
Medium: Modern
reproduction of a
woodblock print; ink and
color on paper



Title: Modern
Reproduction of:
Kabuki Actor Arashi
Ryūzō
Date: 1917-1918
Primary Maker: Tōshūsai
Sharaku
Medium: Modern
reproduction of woodblock
print; ink, color, and mica
on paper



Title: Modern
Reproduction of:
Kabuki Actor Bandō
Hikosaburō III
Date: 20th century
Primary Maker: Tōshūsai
Sharaku
Medium: Modern
reproduction of a
woodblock print; ink and
color on paper



Title: Modern
Reproduction of:
Kabuki Actor Ichikawa
Ebizō as Takemura
Sadanoshin
Date: 20th century
Primary Maker: Tōshūsai
Sharaku
Medium: Modern
reproduction of a
woodblock print; ink and
color on paper



Title: Modern
Reproduction of:
Kabuki actor Morita
Kanaya VIII in a Kabuki
play presented in the
5th month of 1794
Date: 20th century
Primary Maker: Tōshūsai
Sharaku
Medium: Modern
reproduction of a
woodblock print; ink and
color on paper



Title: Modern
Reproduction of:
Kabuki Actor Onoe
Matsusuke
Date: 20th century
Primary Maker: Tōshūsai
Sharaku
Medium: Modern
reproduction of a
woodblock print; ink and
color on paper



Title: Modern
Reproduction of:
Kabuki Actor Onoe
Matsusuke
Date: 20th century
Primary Maker: Tōshūsai
Sharaku
Medium: Modern
reproduction of a
woodblock print; ink and
color on paper



Title: Modern
Reproduction of:
Kabuki Actor Ōtani Oniji
Date: 1917-1918
Primary Maker: Tōshūsai
Sharaku
Medium: Modern
reproduction of woodblock
print; ink, color, and mica
on paper



Title: Modern
Reproduction of:
Kabuki Actor Ōtani
Oniji III
Date: 20th century
Primary Maker: Tōshūsai
Sharaku
Medium: Modern
reproduction of a
woodblock print; ink and
color on paper



Title: Modern
Reproduction of:
Kabuki Actor Ōtani
Oniji III as Edohei
Date: 1956
Primary Maker: Tōshūsai
Sharaku
Medium: Modern
reproduction of a
woodblock print; ink and
color on paper



Title: Modern
Reproduction of:
Kabuki Actor Ōtani
Oniji III as Edohei
Date: 1955
Primary Maker: Tōshūsai
Sharaku
Medium: Modern
reproduction of a
woodblock print; ink and
color on paper



Title: Modern
Reproduction of:
Kabuki Actors Ichikawa
Omezō as Tomita
Hyōtarō and Ōtani Oniji
III as Kawashima
Jibugorō
Date: 20th century
Primary Maker: Tōshūsai
Sharaku
Medium: Modern
reproduction of a
woodblock print; ink and
color on paper



Title: Modern
Reproduction of:
Kabuki Actors Ichikawa
Yaozō III as Fuwa
Banzaemon and
Sakata Hangorō III as
Kosodate Kannonbō
Date: 20th century
Primary Maker: Tōshūsai
Sharaku
Medium: Modern
reproduction of a
woodblock print; ink and
color on paper



Title: Modern
Reproduction of:
Kabuki Actors
Magoemon and
Umegawa
Date: 20th century
Primary Maker: Tōshūsai
Sharaku
Medium: Modern
reproduction of a
woodblock print; ink and
color on paper



Title: Modern
Reproduction of:
Kabuki Actors
Magoemon and
Umegawa
Date: 20th century
Primary Maker: Tōshūsai
Sharaku
Medium: Modern
reproduction of a
woodblock print; ink and
color on paper



Title: Modern
Reproduction of:
Kabuki Actors
Nakajima Wadaemon
as Bōdara Chōzaemon
and Nakamura Konozō
as Gon of the
Kanagawaya
Date: 20th century
Primary Maker: Tōshūsai
Sharaku
Medium: Modern
reproduction of a
woodblock print; ink and
color on paper



Title: Modern
Reproduction of:
Kabuki Actors Segawa
Tomisaburō II and
Nakamura Manyo
Date: 20th century
Primary Maker: Tōshūsai
Sharaku
Medium: Modern
reproduction of a
woodblock print; ink and
color on paper



Title: Modern
Reproduction of:
Kabuki Actors Segawa
Tomisaburō II as
Yadorigi, Wife of Ōgishi
Kurando, and
Nakamura Man'yo as
the Maid Wakakusa
Date: 20th century
Primary Maker: Tōshūsai
Sharaku
Medium: Modern
reproduction of a
woodblock print; ink and
color on paper



Title: Modern
Reproduction of:
Matsumoto Kōshirō IV
as Gorōbei, the
Fishmonger from
San'ya
Date: 20th century
Primary Maker: Tōshūsai
Sharaku
Medium: Modern
reproduction of a
woodblock print; ink and
color on paper



Title: Modern
Reproduction of:
Matsumoto Yonesaburō
in the role of Courtesan
Kewaizaka no Shōshō
(Shinobu) in the Kabuki
Performance
"Katakiuchi
Noriaibanashi"
Date: 20th century
Primary Maker: Tōshūsai
Sharaku
Medium: Modern
reproduction of a
woodblock print; ink and
color on paper



Title: Modern
Reproduction of: Morita
Kan'ya VIII as the
Palanquin-bearer
Uguisu no Jirōsaku
Date: 20th century
Primary Maker: Tōshūsai
Sharaku
Medium: Modern
reproduction of a
woodblock print; ink and
color on paper



Title: Modern
Reproduction of:
Nakayama Tomisaburō
as Miyagino
Date: 20th century
Primary Maker: Tōshūsai
Sharaku
Medium: Modern
reproduction of a
woodblock print; ink and
color on paper



Title: Modern
Reproduction of:
Sakata Hangorō III as
Fujikawa Mizuemon
Date: after 1906
Primary Maker: Tōshūsai
Sharaku
Medium: Modern
reproduction of a
woodblock print; ink and
color on paper



Title: Modern
Reproduction of:
Sakata Hangorō III as
The Villian Fujikawa
Mizuemon
Date: 20th century
Primary Maker: Tōshūsai
Sharaku
Medium: Modern
reproduction of a
woodblock print; ink and
color on paper



Title: Modern
Reproduction of:
Sanogawa Ichimatsu
and Ichikawa
Tomieimon
Date: 20th century
Primary Maker: Tōshūsai
Sharaku
Medium: Modern
reproduction of woodblock
print; ink and color on
paper



Title: Modern
Reproduction of:
Sanogawa Ichimatsu III
as courtesan Onayo of
Gion and Ichikawa
Tomieimon as
Kanisaka Tōma
Date: 20th century
Primary Maker: Tōshūsai
Sharaku
Medium: Modern
reproduction of a
woodblock print; ink and
color on paper



Title: Modern
Reproduction of:
Sanogawa Ichimatsu III
in the role of the
courtesan Onnayo of
Gion and Ichikawa
Tomieimon in the role
of Kanisaka Tōma
Date: 20th century
Primary Maker: Tōshūsai
Sharaku
Medium: Modern
reproduction of a
woodblock print; ink and
color on paper



Title: Modern
Reproduction of:
Sanokawa Ichimatsu III
as the Gion Prostitute
Onayo
Date: 20th century
Primary Maker: Tōshūsai
Sharaku
Medium: Modern
reproduction of a
woodblock print; ink and
color on paper



Title: Modern
Reproduction of:
Sanokawa Ichimatsu III
as the Gion Prostitute
Onayo
Date: 20th century
Primary Maker: Tōshūsai
Sharaku
Medium: Modern
reproduction of a
woodblock print; ink and
color on paper



Title: Modern
Reproduction of:
Sawamura Sōjūrō III as
Ōgishi Kurando
Date: after 1928
Primary Maker: Tōshūsai
Sharaku
Medium: Modern
reproduction of a
woodblock print; ink and
color on paper



Title: Modern
Reproduction of:
Segawa Kikunojō
Date: 1917-1918
Primary Maker: Tōshūsai
Sharaku
Medium: Modern
reproduction of woodblock
print; ink, color, and mica
on paper



Title: Modern
Reproduction of:
Segawa Kikunojō III as
Oshizu, Wife of Tanabe
Bunzō
Date: 20th century
Primary Maker: Tōshūsai
Sharaku
Medium: Modern
reproduction of a
woodblock print; ink and
color on paper



Title: Modern
Reproduction of:
Segawa Tomisaburō II
as Yadorigi, Wife of
Ōgishi Kurando
Date: after 1928
Primary Maker: Tōshūsai
Sharaku
Medium: Modern
reproduction of a
woodblock print; ink and
color on paper



Title: Modern
Reproduction of: The
Kabuki Actor Ichikawa
Yazoō III
Date: 20th century
Primary Maker: Tōshūsai
Sharaku
Medium: Modern
reproduction of a
woodblock print; ink and
color on paper



Title: The Onnagata
Actor Iwai Hanshirō
Date: 1794
Primary Maker: Tōshūsai
Sharaku
Medium: Woodblock print
(Nishiki-e); ink and color on
paper, mica



Title: Ōtani Tokuji as a
servant, Sodesuke
Date: 1794
Primary Maker: Tōshūsai
Sharaku
Medium: nishiki-e on mica
ground Technique: Nishiki-
e (Woodblock print with
color blocks), mica



Title: Tanimura Torazō
as Washizuka Hachiheiji
Date: 1794
Primary Maker: Tōshūsai
Sharaku
Medium: Woodblock print
(Nishiki-e); ink and color on
paper, mica